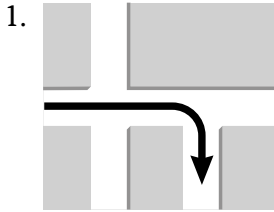


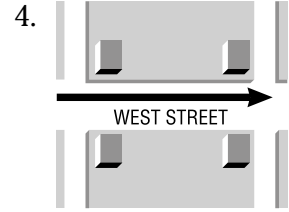
6

Where's the station?

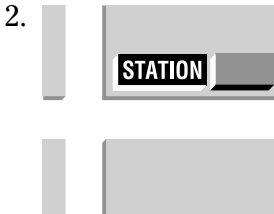
1 Match the directions with the correct picture.



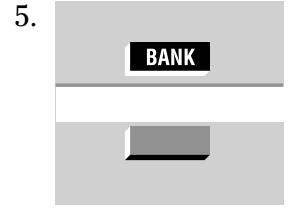
a. Go straight along West Street.



b. Go past the shopping mall.



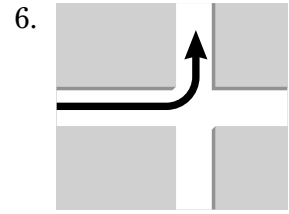
c. It's across from the bank.



d. Turn left.



e. Take the second right.



f. It's next to the station.

2 Put the words in the questions in the correct order.

a. you / know / do / subway / where / the / is / ?

Do you know where the subway is?

b. do / how / get / I / the / to / stop / bus / ?

.....

c. the / where's / station / ?

.....

3 Complete the sentences. Use the words in the box. One word is used twice.

along at on to

a. The museum is next the park.

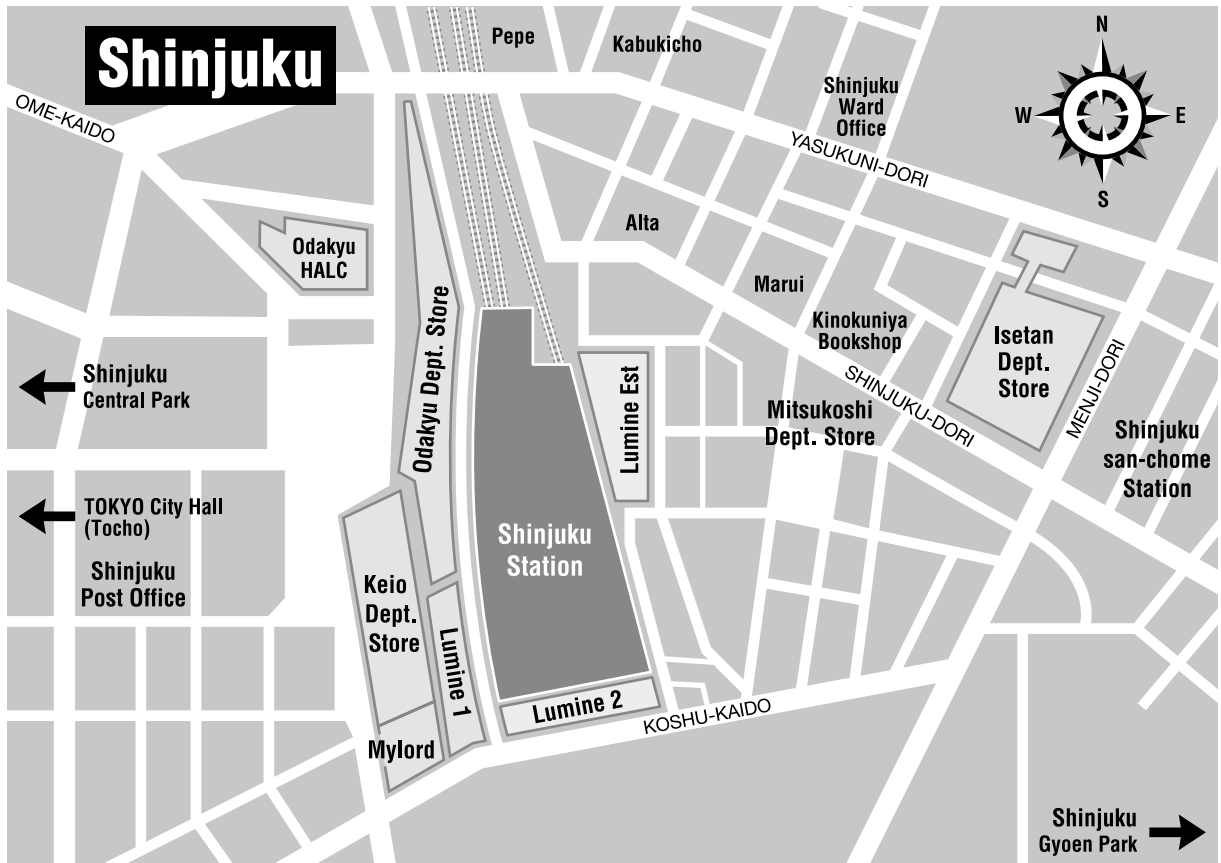
b. The subway station is over there — the left.

c. Walk straight this street for three blocks.

d. Turn right the traffic lights.

e. Excuse me, how do I get the movie theater?

4 Look at the map and answer the questions.



- a. Is Keio department store next to the post office?
No, it isn't. It's next to Lumine 1.
- b. Is Odakyu department store near Shinjuku san-chome station?

- c. Is Kinokuniya bookshop next to Marui?

- d. Is Shinjuku Central Park to the east of Shinjuku station?

- e. Is Lumine 2 on Koshu-kaido?

- f. Is Shinjuku Gyoen Park to the southeast of Shinjuku station?

- g. Is Lumine 2 between Keio department store and Mylord?
