



I'm a student.

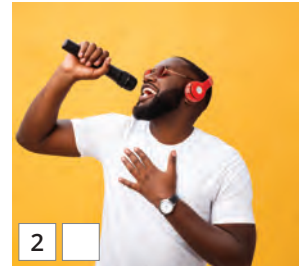
SPEAKING
Introducing yourself
GRAMMAR
The verb *be*
LISTENING
Meeting people
READING
Occupations

WARM UP
Introduce yourself to your partner

VOCABULARY

1 Look at the photos. What are their jobs? Write the correct letter.

- | | |
|------------------|------------------|
| a. a singer | f. a server |
| b. an actor | g. a businessman |
| c. a doctor | h. a student |
| d. a sales clerk | i. a chef |
| e. a teacher | j. a designer |



2 Listen and check your answers.

3 PAIR WORK Practice spelling the words above.

How do you spell doctor?

D-O-C-T-O-R. How do you spell student?

VOCABULARY TIP

Write down new words in a notebook.

doctor
businessman
server

CONVERSATION



1 Read the conversations. Then watch the video. Practice the conversations with a partner.

- Maria** Hi, I'm Maria. Nice to meet you.
Tom My name's Tom. Nice to meet you, too.
Maria So, where are you from, Tom?
Tom I'm from Los Angeles. How about you?
Maria I'm from Mexico.
- Tom** Hello, Maria.
Maria Oh, hi, Tom. How are you?
Tom I'm fine, thanks. How about you?
Maria Great, thanks. So, are you a student here?
Tom No, I'm not. I'm a teacher. You're in my class!
Maria Oh...well, great!

USEFUL WORDS

How are you?



Great!

Pretty good.

Fine.

OK.

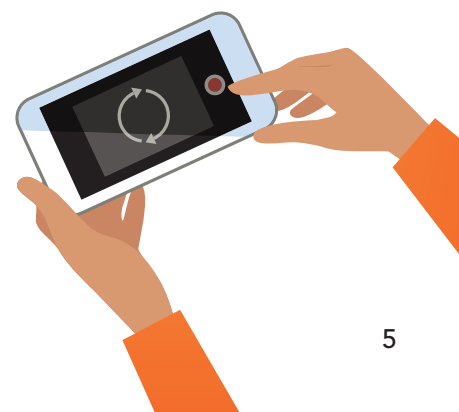
Not bad.



2 **OVER TO YOU** Practice the conversations again. Use the ideas below. Add your own ideas. Then make a video of your conversation.

Hi, I'm Leo. Nice to meet you.

My name's Bea. Nice to meet you, too.



LANGUAGE PRACTICE 1



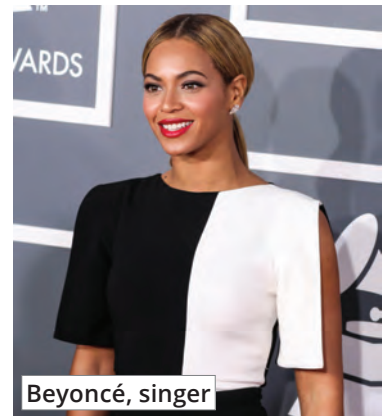
Statements with *be*

Grammar Reference page 96

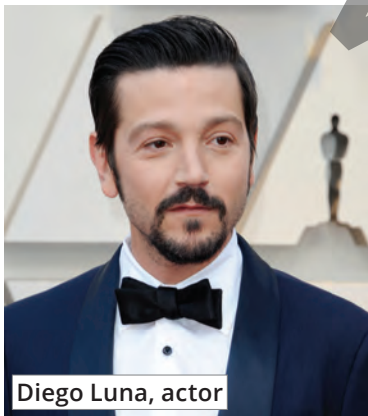
I'm Julia.	I am → I'm	I'm not an actor.	I am not → I'm not
You're a student.	You are → You're	He isn't a teacher.	isn't → is not
He's a doctor.	He is → He's		My name is → My name's
She's an actor.	She is → She's		



1 Look at the pictures. Complete the sentences. Then listen and check your answers.



- Mary Barra isn't a doctor.
She's a businesswoman.
- Gordon Ramsay _____ a server.
_____ a chef.
- Beyoncé _____ a singer.
_____ a student.



- Diego Luna _____ a teacher.
_____ an actor.
- Vera Wang _____ a designer.
_____ a singer.
- Barry Marshall _____ a doctor.
_____ a sales clerk.



2 Tell your class about yourself.

Hi, I'm Rosa. I'm from Colombia. I'm a student.

Hello, I'm David. I'm from Paris. I'm a server.

Hi, I'm _____.

LANGUAGE PRACTICE 2



Yes/No questions with *be*

Grammar Reference page 96

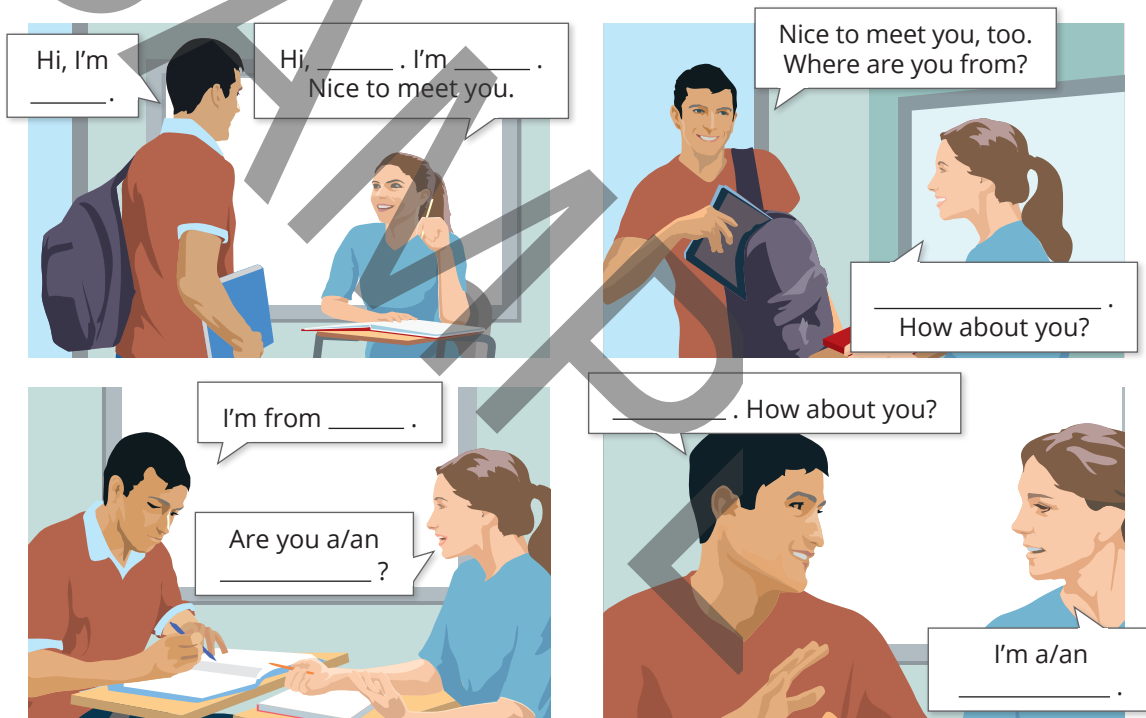
Are you a teacher?	Yes, I am./No, I'm not.
Are they from Peru?	Yes, they are./No, they aren't.
Is he a chef?	Yes, he is./No, he isn't.

1 Complete the conversations. Use information about you for the last item.

- | | |
|--|--|
| 1. A <u>Are</u> you from South Korea?
B Yes, I <u>am</u> . | 4. A _____ a designer?
B Yes, she _____. |
| 2. A _____ you a teacher?
B No, _____ not. I _____ a student. | 5. A _____ from Rio?
B No, they _____ . _____ from São Paulo. |
| 3. A Is _____ a chef?
B No, he _____. He's a server. | 6. A _____ ?
B _____ . |



2 PAIR WORK Practice the conversation with a partner. Use information about you.



PRONUNCIATION Reduction of *a* / *an*



1 Listen. Notice the reduced sounds of *a* and *an*.

Unreduced	Reduced
1. I'm a student.	/aɪmə/ student.
2. You're a teacher.	/jəɾə/ teacher.
3. He's a server.	/hɪzə/ server.
4. She's an actor.	/ʃɪzən/ actor.



2 Listen again and repeat. Be sure to reduce *a* and *an*.

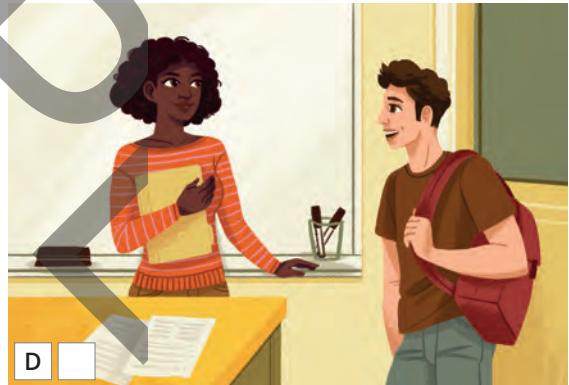
LISTENING

1 BEFORE YOU LISTEN Match the words and the pictures.

- a. an engineer b. a model c. a programmer d. a tour guide



2 Listen to the people talking. Which picture are they in? Number the pictures.



3 Listen again. Choose (✓) True or False.

- Tina is an engineer.
- Ana is from Thailand.
- The band is AKB48.
- Nova is from Indonesia.

True	False
<input type="checkbox"/>	<input type="checkbox"/>
<input type="checkbox"/>	<input type="checkbox"/>
<input type="checkbox"/>	<input type="checkbox"/>
<input type="checkbox"/>	<input type="checkbox"/>

4 LISTENING PLUS Listen to more of Nova and John's conversation. Choose the correct answer.

- John is from ____
 - a. New Orleans
 - b. Los Angeles
 - c. New York
- John is ____
 - a. an actor
 - b. a model
 - c. a server
- Nova is ____
 - a. a tour guide
 - b. a model
 - c. an actor

SPEAKING Are you from Brazil?

1 Read the instructions below to play the game.

1. Play the game in pairs or groups.
2. Choose an object as a game piece.
3. Use a coin to move. Heads = 1 space. Tails = 2 spaces.
4. Take turns asking and answering questions.



South Korea



Brazil



Canada



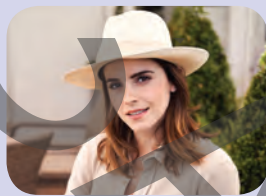
United States

Is Emma Watson a singer?

No, she isn't. She's an actor.

2 PAIR WORK Now play the game. Who is the winner?

START



1 Is Emma Watson a model?



2 Are you from Thailand?



3 How do you spell this job?



4 Make a question.



7 Make a question.



6 Is your teacher from Canada?



5 Is the band BTS from Brazil?



8 Are you a doctor?



9 Is Bruno Mars an actor?



10 Make a question.

FINISH

3 OVER TO YOU Find information about your favorite celebrity. Tell your classmates.

GO ONLINE
for grammar, vocabulary, and speaking practice

NOW I CAN

SPEAKING

make an introduction.

GRAMMAR

make statements and questions with *be*.

LISTENING

understand basic information about people.

READING

understand what people do.