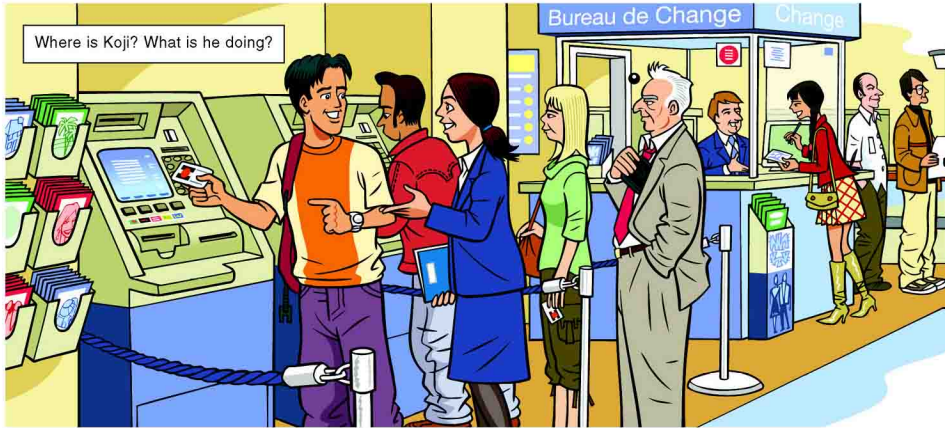


## 6 Can I use my card in this A.T.M.?



### 12 LISTENING

Listen to these conversations in the bank. Check (✓) the correct answers.



cash machine = A.T.M.  
madam = ma'am

- Koji
  - can use his card in the cash machine.
  - can't use his card in the cash machine.
- The woman changes
  - ¥15,000 into euros.
  - ¥50,000 into euros.
- The man wants
  - to buy some traveler's checks.
  - to cash some traveler's checks.
- The bank charges
  - a commission.
  - no commission.

### LOOK AND LEARN

Study these questions and answers:

15 = fifteen  
50 = fifty  
19 = nineteen  
90 = ninety  
1,000 = one thousand  
10,000 = ten thousand  
100,000 = one hundred thousand

Customer	Bank clerk
Can I change some money here? cash some traveler's checks please? change some yen into euros?	Yes, you can. No problem. Certainly, sir. madam.
Can I use my card in this A.T.M.?	Yes, this card's fine. I'm afraid not.
Bank clerk	Customer
How much would you like to change? Could you sign the checks, please? Do you have any I.D.?	¥10,000, please. Certainly. Here's my passport.

Now practice with a partner. Take turns asking and answering.



Listen to the conversation between Koji and the bank clerk. Fill in the blanks.

CLERK: Hello. Can I help you?

KOJI: Yes, please. Can I change some (1)..... traveler's checks into (2)....., please?

CLERK: Certainly. How much do you want to change?

KOJI: (3)....., please.

CLERK: May I see (4)....., please?

KOJI: Yes, here it is.

CLERK: Thank you. Can you sign the checks, please?

KOJI: Yes. Can I borrow a pen?

CLERK: Here you are. That comes to (5).....

### OVER TO YOU!

Make three more conversations like the one above. Use this information:

(1) euros	U.S. dollars	yen
(2) yen	euros	U.S. dollars
(3) €150	\$100	¥30,000
(4) some identification	your passport	your I.D.
(5) ¥19,000	€90	\$250

### ACTIVITY

Work with a partner. Take turns being Student A and Student B.

**Student A:** Turn to page 54.

**Student B:** Ask if you can use your Japanese bank card in the A.T.M. Then change ¥20,000 in traveler's checks into euros.

